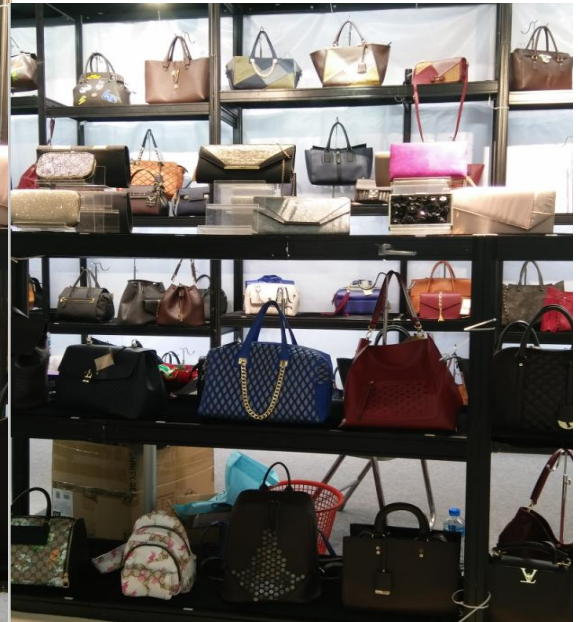


Introduction

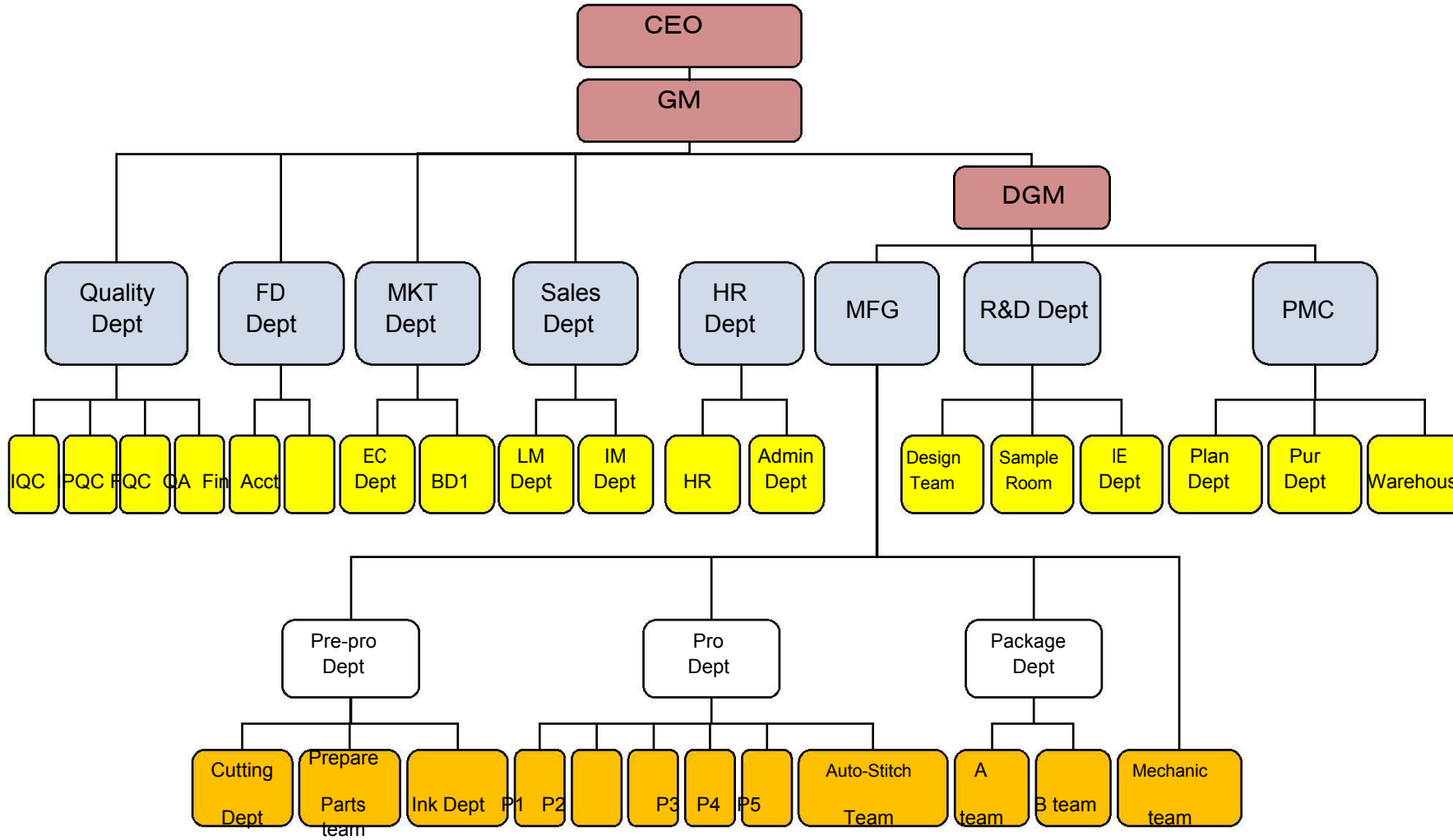


Guangzhou Sunshine Leather factory is a professional bag manufacture. The company established 2008 at shiling town,Huadu district ,Guangzhou city ,China.

Guangzhou Sunshine Leather is a professional bag manufacturing company which has been established 2008. We have experienced and technically sound manpower with advance production equipment and facilities. We are ready to produce any kinds of Ladies Hand bags & Backpack & Wallet &Cosmetic Bag&Evening Bag and we have facility to source all kinds of material easily ,have own brother's metal factory . Can open metal according your request.



ORGANIZATION CHART



GuangZhou Sunshine Leather Co.,Ltd

AT A GLANCE

- ◆ **TOTAL WORKERS:90 WORKERS**
- ◆ **SAMPLE ROOM (TECHNICIAN):10STAFF**
- ◆ **QUALITY SECTION(QUALITY SUPERVISOR): 5WORKERS**
- ◆ **PRODUCTION CAPACITY PER MONTH :60,000PCS**
- ◆ **PREVIOUS BUYER:BEBE -USA ,FRIDA KAHLI-USA**

FACTORY VIEW

- 1-PRODUCTION FLOOR
- 2-SHOWROOM CORNER
- 3-PACKING SECTION
- 4-SAMPLE SECTION









OUR ADDRESS :

HECHEN ,SHILING,HUADU,GUANGZHOU,GUANGDONG,CHINA

CONTACT PERSON: SOPHIE WANG

EMAIL: handbagleather@163.com

PHONE NUMBER : 0086-18826102572

WECHAT/WHATSAPP:0086-18826102572

SKYPE : handbag1989

BUSINESS INFORMATION

1, Making Sample :3-5days

2, Production Lead Time : 45 to 60days

3, MOQ : 100Per/style

4, Payment terms : 30%deposit ,70%balance before shipment .

5, T/T acceptable